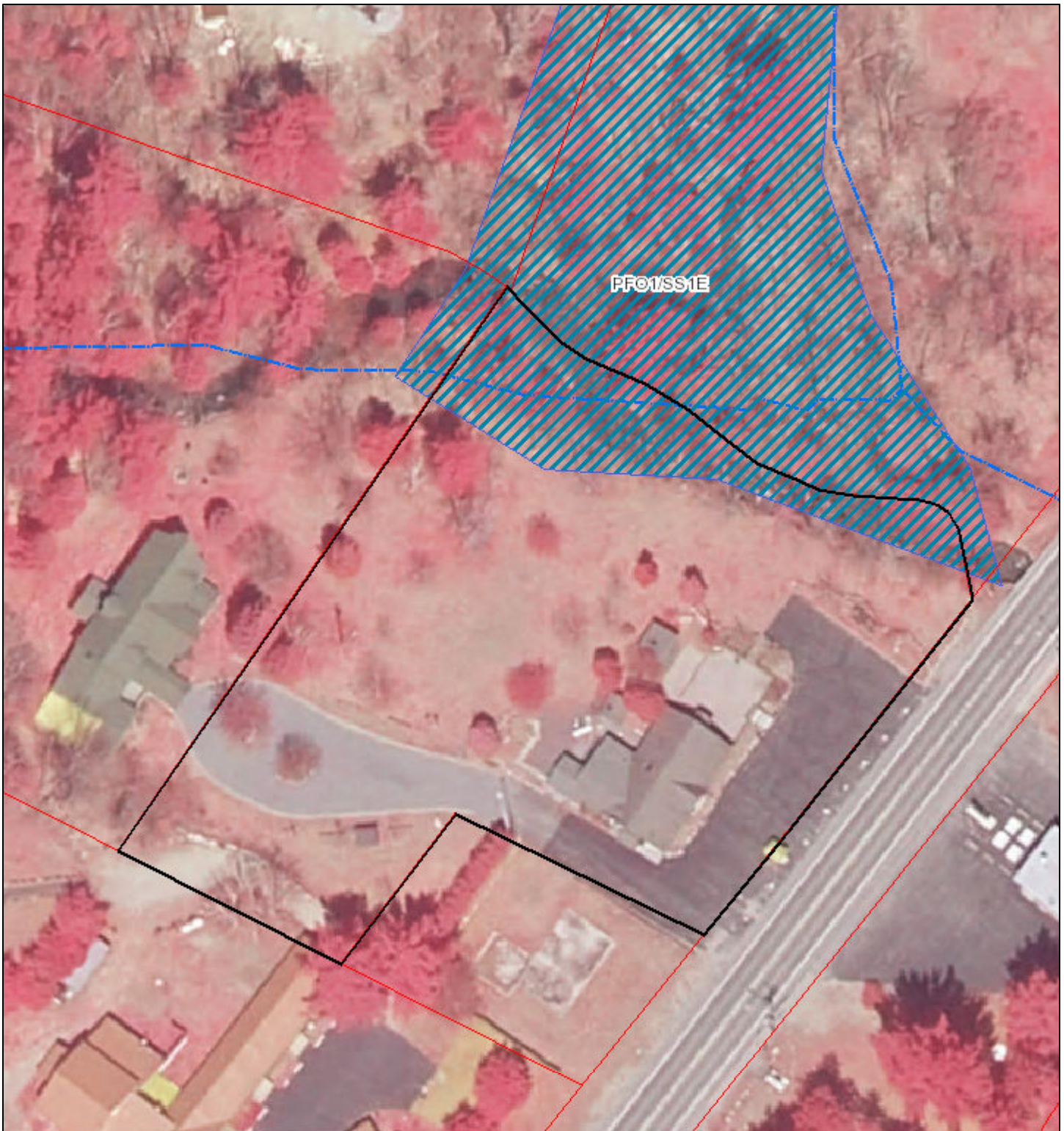


# J2025-0459 LUS Wetlands Map



6/4/2025, 9:28:26 AM

This is advisory only, not to be used to confirm exact boundary location or for determining Agency jurisdiction.

1:1,030

- |                          |                                     |                                |                       |
|--------------------------|-------------------------------------|--------------------------------|-----------------------|
| Temp Highlight Parcel(s) | <b>APA Regulatory Wetland Areas</b> | APA Regulatory Linear Wetlands | Harrietstown PVT Land |
| Parcels 2022             | Wetland                             | Franklin PVT Land              | Chester PVT Land      |
| Linear Wetlands          | Deep Water Marsh                    | North Elba PVT Land            |                       |
| Wetland Areas            |                                     |                                |                       |

Coordinate System: WGS 1984 Web Mercator Auxiliary Sphere

NYS Adirondack Park Agency  
NYS ITS Geospatial Services, Westchester County GIS